



# Master's in Public Health

Make a meaningful difference in your community





# Table of Contents

---

Meet the Program Director	3
Why a Master's in Public Health?	4
Earn your master's degree at Goodwin University	5
Course format	7
Admission requirements	9
Tuition information	10
Financial aid	11
Student resources and support	12



## Become a skilled public health practitioner

At Goodwin University, we'll give you the tools to tackle challenging public health issues on a local, national, and global level. You'll gain insight into the major factors that influence public health and work to find solutions to complex issues such as acute and chronic illnesses, lifestyle and health behavior change, maternal and child health, the opioid epidemic, Medicare for all, influenza, obesity, and more.

Earning your Master's in Public Health at Goodwin University will prepare you for a rewarding career in a wide variety of fields such as public health administration, policy, and advocacy. The skills you gain while earning your degree are applicable to many careers related to healthcare, infection and disease control, and more. In a world where our knowledge of public health is constantly evolving, we need dedicated public health professionals seeking to positively impact the lives of others.

## Meet Program Director Meredith Gaffney



**Meredith Gaffney** has over 25 years of experience in the primary and public health fields. She first earned her BA in International Relations from Ohio State University and her master's in Public Health (MPH) from Tulane University. Later, she pursued postgraduate studies abroad in Medical Parasitology at Universidade Nova de Lisboa and the Psychosocial Experiences and Needs of Refugees at Oxford University. She joined the UB faculty in November 2020 and is currently a doctoral candidate.

Gaffney's career is a testament to her hands-on approach in the global healthcare sector. She has successfully planned projects and managed grants with renowned organizations like UNICEF and USAID. Her impactful work extends to the grassroots level, where she has made a difference through her contributions to organizations such as Planned Parenthood of Southern New England and Save the Children.

Her teaching philosophy is rooted in the belief that education should be inclusive, equitable, and engaging — fostering critical thinking and real-world application. This philosophy is reflected in the MPH curriculum, which goes beyond the core and foundational public health competencies.

In 2024, the MPH program integrated the *Including People with Disabilities: Public Health Workforce Competencies* into the curriculum in partnership with the Center for Excellence in Developmental Disabilities Education, Research, and Service at UCONN.

The MPH program further enhances this by utilizing the principles of Universal Design for Learning (UDL) and integrating real-world experiences into the curriculum, ensuring every student feels valued and included. These principles are executed through an incredibly fantastic group of diverse and dedicated professors. These professionals bridge the gap between theory and practice, sharing firsthand experiences with the latest technologies, challenges, and ethical considerations in the public health field.

A professional genuinely devoted to her field, Gaffney is humbled to work with such an excellent public health community. In her spare time, she has volunteered her expertise to various organizations, from the United States Peace Corps, the Branford Land Trust, the Branford Board of Education, and the Girls Scouts of America.

# Why a Master's in Public Health?



## Tackle complex global health issues

**Earning your MPH degree will prepare you to tackle some of the world's most pressing health issues – including everything from obesity to the opioid epidemic.**

You'll learn how these issues impact individuals and the health of their communities on a larger scale. With a Master's in Public Health, you'll graduate with the skills to pose solutions to these issues in a real-world setting.



## Be prepared when crisis strikes

**In a post-pandemic world, we are more aware than ever of the growing need for professionals who are prepared to step up in the event of a public health crisis.**

The healthcare industry has recognized the need for public health leaders with knowledge of relevant threats to community wellness so that we can stop major public health crises before they put larger groups of people at risk. As a public health professional, you'll work to recognize and problem-solve these threats and act as a leader when uncertainty and health risks arise.



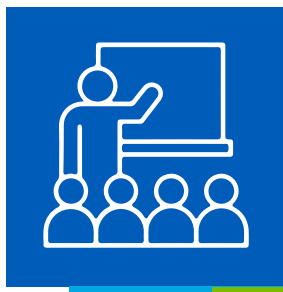
## Advance your career opportunities

**When you earn a master's degree in Public Health, you open yourself up to a world of new career potential.**

You will be recognized as a relevant figure in the healthcare field and become more qualified for leadership roles and higher salaries. If you have a passion for working in the field and practicing hands-on patient care, you'll have the opportunity to choose that path. A master's degree also allows you to pursue administrative and directorial roles, as well. With an MPH, your career opportunities are endless.



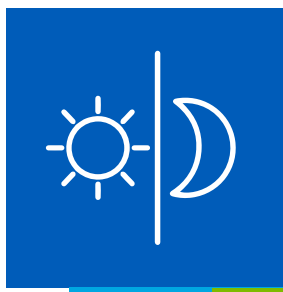
# Earn your master's degree at Goodwin University



## A hands-on learning experience

**In our MPH program, you'll collaborate with other students to come up with real-world applications for your learning.**

Our faculty will use relevant examples and nurture your critical thinking skills, so you'll graduate with the ability to apply what you've learned to real communities.



## Flexible class schedules

**Whether you're a working professional or taking care of your family, we understand that you're busy.**

That's why at Goodwin University, you can earn your Master's in Public Health completely online! You'll connect with your peers in meaningful virtual discussions, so you'll never have to sacrifice the quality of your education for the convenience of online learning.



## We put you first

**At Goodwin University, we have a completely student-centered approach to learning.**

Our expert faculty are dedicated to giving you the one-on-one attention you deserve, and we offer a wide variety of student resources such as counseling services, financial aid, and more. While you're earning your degree, we'll be there to support you every step of the way!



## We focus on career readiness

**Pursuing a master's degree can be a pathway to more fulfillment and better compensation in your career – that's why Goodwin University is committed to preparing you for success in your field.**

Our curriculum is tailored to give you the skills and knowledge to tackle real-world problems and make you a more marketable job candidate once you graduate.





## Course format

You deserve a college that offers graduate level classes on your schedule. At Goodwin University, we understand that work and family obligations are just as important as pursuing your master's degree. That's why we designed our Master's in Public Health program to be completed entirely online – so you don't have to waste your time or money. Unlike many other graduate level organizational leadership schools, we're all about convenience.

- MPH classes are offered in an accelerated 7-week format.
- Complete the program fully online in as few as 12-15 months.
- We offer six program starts per year.
- Choose to attend full or part-time.



## Class formatting options

Our MPH program is offered entirely online, so you have the flexibility you need to earn your degree. We offer a combination of synchronous and asynchronous courses, so it is structured to fit a wide variety of learning preferences.



### Synchronous

**Some courses in this program are offered in the form of online, face-to-face meetings with your classmates and faculty.**

This gives you the opportunity to engage in important conversations and debates regarding your course material. Participating in a synchronous learning session gives you the experience of an in-person class setting without the inconvenience of having to drive to campus.



### Asynchronous

**Our asynchronous courses are the perfect way to earn a master's degree while working around your busy schedule.**

Asynchronous courses can be completed on your time and don't require any face-to-face meetings, so they're a great fit for the working professional. You'll work independently to complete your assignments and touch base with our faculty along the way to make sure you are getting the support you need.

## Curriculum

For complete curriculum details, please visit [our website](#).



# Admission requirements

## Master's in Public Health

At Goodwin, we don't require GRE scores for admission, letters of recommendation, or an interview with the program director.

### All MPH program applicants must:

- Complete a graduate application for admission.
- Submit an official transcript verifying receipt of a bachelor's degree from a college or university accredited by an accrediting agency recognized by the Council for Higher Education

Accreditation (CHEA) or the equivalent of this degree from another country with a cumulative GPA of at least 2.5.

- Applicants with less than a 2.5 CGPA may be considered for conditional admittance into the program under certain circumstances.



## Tuition information

Tuition for our master's in Public Health program is competitive with other private non-profit colleges in CT, and we break it down for you, so you know exactly what you'll pay ahead of time.

Graduate Programs Tuition and Fees 2024-2025	
Tuition	<b>\$605 / credit</b>
General Student Fee	<b>\$160</b>
Health Science program fee	<b>\$100</b>
One-time technology Fee	<b>\$100</b>



## Financial aid

Paying for college doesn't have to be stressful — we make it easy to understand the costs of your education before classes even begin.

We are committed to helping you earn your degree at a cost that is affordable to you. At Goodwin, there are a variety of financial aid opportunities available to you, including scholarships, grants, student loans that need to be repaid, and work-study opportunities that provide a regular paycheck.

Goodwin has been awarded \$1.5M for scholarship assistance for MPH enrollments.\* **You may be eligible for up to \$15,000!** Ask an admissions officer to see if you qualify.

**[Check out our financial aid page to find out how Goodwin University can help you pay for your education.](#)**

\*The Public Health SCHOLARS program is supported by the Health Resources and Services Administration (HRSA) of the U.S. Department of Health and Human Services (HHS) as part of an award totaling \$1.5. The contents are those of the author(s) and do not necessarily represent the official views of, nor an endorsement, by HRSA, HHS or the U.S. Government.



# Student resources and support

At Goodwin University, we are invested in the continued success of our students. We believe that you deserve great support services and resources to help you achieve your goals!

## Academic Resources

- [Academic Advising](#)
- [Admissions](#)
- [Financial Aid](#)
- [Registrar's Office](#)

## Academic Support

- [Academic Success Center](#)
- [Library](#)
- [Tutoring](#)

## College Experience

- [Clubs and Organizations](#)
- [Student Engagement](#)

## Professional Development

- [Lifetime Career Services](#)

## Personal Support Services

- [Ann B. Clark Co-op](#)
- [Counseling](#)
- [Disability and Access Services](#)



©2024 Goodwin University  
One Riverside Drive  
East Hartford, CT 06118



**Contact us today!**

**Call: 800-889-3282 | Text: 860-467-1511**

**[goodwin.edu/mph](https://goodwin.edu/mph)**

Goodwin University is a nonprofit institution of higher education and is accredited by the New England Commission of Higher Education (NECHE).