



Accelerated Bachelor of Science in Nursing

Get on the fast track to a rewarding healthcare career.





Table of Contents

Meet The Program Director	3
Why an ABSN?	4
Why Goodwin?	5
Curriculum	6
Course Format	6
Admissions Requirements	7
Point System	8
Student Testimonials	9
Student Resources and Support	10
Financial Aid Information	10



Become an RN and start making a difference in your community.

Have you already earned your bachelor's degree in a non-nursing major? Don't worry — it's never too late to start a rewarding nursing career! Because you've already developed the skillsets that come with a four-year degree, an Accelerated Bachelor of Science in Nursing program could be the perfect fit for you. In this program, you'll build on your existing knowledge to learn core nursing concepts and participate in hands-on clinical hours that will set you up for success.

At Goodwin University, you can complete our ABSN program in as few as 16 months full-time! By leveraging the skills you've already mastered while earning your bachelor's degree, in the accelerated program, you'll focus on learning the critical concepts related to healthcare in order to excel in your career. We'll prepare you to jump into a fulfilling role that truly changes lives. So don't wait — find out if our ABSN program is the right fit for you!

Say hello to Program Director Dr. Vivienne Friday.



“The BSN programs at Goodwin University are challenging and allow students to apply existing skills and competencies to progress within each program. We embrace Open Educational Resources (OER) to make courses more affordable and accessible. We also incorporate Universal Design for Learning (UDL), an education framework that includes various strategies to fit diverse learners.

As the BSN program director, I advise students to strive for success, set lofty goals, and pursue them passionately. I instruct pupils to ignore those who try to convince them that they cannot do something significant. I guide scholars to seek an education as a safeguard against sentiments of what could have been. Become a lifelong learner and focus on your future career.

Earn a valuable degree that enhances your quality of life and prepares you to make a difference to yourself, your family, and your community. I hope you join Goodwin’s nurturing nursing community. We’re ready to support you to become your best self.”

Dr. Vivienne Friday, MSN, RN, CNE Chief Nurse Administrator, Interim Dean of Nursing, BSN Program Director, and Associate Professor

Dr. Vivienne Friday is an experienced nurse educator with specific concentrations in the healthcare and well-being of the older populations. She spends her time mentoring nursing students and faculty to help them realize their highest potential. Dr. Friday is also an accomplished, awarded author with scholarly publications and conference presentations from various well-respected nursing leagues and councils.

Dr. Friday’s passion for the nursing profession began when watching the midwives and visiting nurses care for the sick in her small Jamaican village. Dr. Friday was also the first in her family to graduate from college. A lifelong learner, she continued her education while embarking on career success.

Now the Chief Nurse Administrator, Interim Dean of Nursing, Bachelor of Science in Nursing (BSN), and Accelerated Bachelor of Science in Nursing (ABSBN) program director for Goodwin University, Dr. Friday will continue to impact the lives of students, faculty, and staff — just as the visiting nurses in her village inspired and motivated her to make a difference years ago.

Achieve your dream of becoming a nurse with our ABSN program.



Build on the skills you've already developed.

Our ABSN program is designed for individuals who already have a bachelor's degree in an unrelated field. By holding a bachelor's degree, you'll come prepared with the fundamental skills required of a career professional, meaning you can focus less on general education and more on gaining the critical concepts involved in healthcare. This makes it possible for you to **complete the ABSN program in as few as 16 months full-time** — so you can become a compassionate advocate for patients and their families in less time than a typical BSN program.

Become qualified for in-demand nursing opportunities.

A bachelor's degree in Nursing will position you as a leader in the nursing field and equip you with the advanced skills that healthcare administrators are searching for. Earning your ABSN will show employers that you are an experienced nurse who is passionate about advancing your knowledge and skillsets. You'll become a highly sought-after job candidate with the ability to present fresh ideas and best practices for patient care.

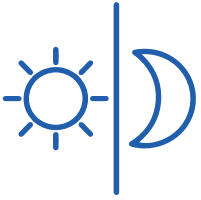


Get prepared to take the NCLEX.

Once you complete your ABSN degree, you will have to sit for the National Council Licensure Exam (NCLEX) in order to become licensed as an RN. This exam assesses your knowledge of core nursing concepts, as well as your ability to adapt and problem-solve in the field. At Goodwin, we'll prepare you with a comprehensive range of skills and patient experiences to set you up for success when you take the exam. By participating in clinical rotations, you'll sharpen your critical thinking skills and come prepared with a wealth of knowledge to refer to while taking the licensure exam.



Earn your degree at Goodwin University.



Flexible schedules

Whether you're a working professional or taking care of your family, we understand that you're busy. That's why, at Goodwin University, we offer flexible class schedules that fit right into your lifestyle. Our Accelerated BSN program offers classes days and evenings, and clinicals can be scheduled any day of the week, including weekends. You should never sacrifice your personal responsibilities to get your degree, and at Goodwin, you don't have to.



We put you first.

At Goodwin University, we have a student-centered approach to learning. Our expert faculty are dedicated to giving you the one-on-one attention you deserve, and we offer a wide variety of student resources such as counseling services, financial aid, our Ann B. Clark Co-op, and more. While you're earning your degree, we'll be there to support you every step of the way!



A hands-on learning experience

In our Accelerated BSN program, you'll get the hands-on training you need to emerge as a compassionate, trusted healthcare professional. You'll work alongside other students in clinical rotations, where you'll apply the concepts you learn in the classroom to real patient-care scenarios. Our licensed faculty will guide you as you practice in our Nursing Sim Lab, which utilizes realistic simulation mannequins that talk, react, and behave like human patients to give you experiences similar to what you would see in a real healthcare setting. By participating in these clinical rotations, you'll gain the skills and confidence you need to dive headfirst into this exciting new career.



A focus on career readiness

Pursuing a Nursing degree can lead to an incredibly fulfilling career with high salary potential — that's why Goodwin University is committed to preparing you for success in your field. Our curriculum is tailored to give you the skills and knowledge to manage real-world patient care issues and make you a more marketable job candidate once you graduate.

Curriculum

Prerequisite Courses - 22 credits		
BIO 211	Anatomy and Physiology I	4
BIO 212	Anatomy and Physiology II	4
BIO 235	Microbiology	4
CHEM 101	Chemistry	4
PSY 212	Lifespan Development	3
STAT 167	Principles of Statistics	3
Core Courses - 60 credits		
Fall Semester I		
NUR 205	Health Assessment & Skills Development	6
NUR 301	Foundations of the Nursing Profession	3
NUR 309	Principles of Pathophysiology	3
NUR 375	Pharmacology for Nurses	3
Spring Semester I		
NUR 215	The Wellness Continuum for Adults I	6
NUR 320	Mental Health Nursing	5
NUR 311	Nursing Research and Evidence-Based Practice	3
Summer Semester Session I		
NUR 305	The Wellness Continuum II (15-week course)	7
NUR 335	The Wellness Continuum for Children and Families	3
Summer Semester Session II		
NUR 430	Community and Public Health Nursing	5
Fall Semester II		
NUR 435	The Wellness Continuum for Women, Newborns and Families	4
NUR 450	Caring for Adults with Complex Health Alterations	9
NUR 457	Nursing Leadership	3

TOTAL CREDITS IN THE PROGRAM: 120

Course format

You deserve a college that offers classes on your schedule. In our Accelerated BSN program, classes are offered days and evenings, Monday through Friday. Clinicals are designed to work around your busy lifestyle — you can schedule your hands-on training any day of the week, including weekends! You can complete your core courses (60 credits) in as few as 16 months full-time — so you don't have to waste any time before starting your nursing career.

To ensure you gain hands-on experience in our simulation labs and enter the field with a deep knowledge of applicable healthcare concepts, **classes and clinicals are offered exclusively on-campus.**

Accelerated BSN program admissions requirements

We pride ourselves on providing you with a quality, in-depth nursing education. Our program is rigorous, and our high volume of applicants means you must meet certain criteria in order to gain acceptance into the program. The requirements are as follows.

All applicants to the ABSN program must:

- Complete the application for admission into Goodwin University. Applicants to the ABSN program must first meet the prerequisites for admission and be accepted into Goodwin University
- Complete the ABSN program application
 - ▶ Official college transcripts are required with the application if the applicant has courses from another institution that will need to be transferred in to meet the prerequisite courses required for admission or to use as proof of level of education for the admission point system. If the transcripts have already been provided to the Registrar, the Nursing department will retrieve copies.
- Take the examination being used for pre-admission
 - ▶ This examination is administered off campus three times a year, (January, May and September). The cost of the exam is the responsibility of the applicant. Students may only register for the exam when they are submitting an application or reactivating an application that is already on file. It is the student's responsibility to follow the deadlines and instructions posted on the application. All questions regarding exam registration dates and deadlines must be directed to the Nursing Department. Students may only attempt the pre-entrance examination one time per semester for a total of six (6) attempts. Students must attain the pre-determined minimal score for whichever exam is being utilized at the time the student applies to be considered for admission. Student must complete or have already completed BIO 212 (A&P II) in the semester (s)he registers for the pre-entrance exam.
- Earn a minimum GPA of 3.0 in the most recent college course work. College GPA is based on most recent attained collegiate degree or a minimum of 12 completed credits at Goodwin University. GPA's are not rounded.
- Complete the following prerequisite courses with a minimum grade of "C" prior to applying:
 - ▶ Chemistry - CHEM 101 (Goodwin University) or equivalent
 - ▶ Lifespan Development - PSY 212 (Goodwin University) or equivalent
 - ▶ Statistics - STAT 167 (Goodwin University) or equivalent
- Complete the following prerequisite courses with a minimum grade of "C+" prior to applying:
 - ▶ Biology - BIO 211, Anatomy & Physiology I (Goodwin University) or equivalent completed within the last five years

- ▶ Biology - BIO 212 Anatomy & Physiology II (Goodwin University) or equivalent completed within the last five years
- ▶ Biology - BIO 235 Microbiology (Goodwin University) or equivalent completed within the last ten years

Any prerequisite courses transferred from another college must be equivalent to Goodwin University courses and must meet the grade requirement of "C+" as previously stated.

Point System

Applicants who meet the above criteria will be accepted based on our Point System, which scores each person based on their educational background, cumulative GPA, and their score on the pre-entrance exam.

Here's a look at how you'll be scored:

I. Previous University Education	Score
Bachelor's Degree Received from Goodwin University or University of Bridgeport received after January of 2021	2
Master's Degree	4
II. Completed Goodwin University Courses (C or higher) NO points for FIL 101	
1-3 course(s)	1
4-6 courses	2
≥ 7 courses	3
III. Cumulative GPA (not rounded) based on completed Goodwin University coursework* totaling >12 credits or most recent college degree (Minimum 3.0 to qualify)	
3.0 - 3.2	1
3.3 - 3.5	2
3.6 - 3.7	3
3.8 - 4.0	4
IV. Composite Score on ATI TEAS Pre-Entrance Exam (>58.7% to qualify)	
58.7% - 62.9%	1
63.0% - 67.1%	2
67.2% - 71.3%	3
71.4% - 75.5%	4
75.6% - 79.7%	5
79.8% - 83.9%	6
84.0% - 88.1%	7
88.2% - 92.3%	8
92.4% - 96.5%	9
96.6% - 100%	10

MAXIMUM TOTAL POINTS: 21

*Credit by exam does not count as a course taken.

Testimonials



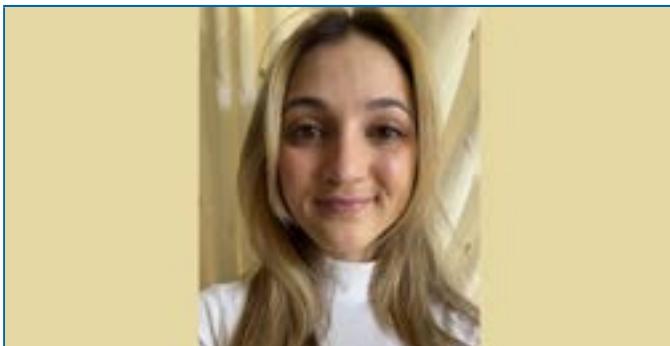
“My wife was very sick with breast cancer when I went through the ABSN program. I almost quit to take care of her; however, my classmates and professors helped me to stay strong and focus on my studies. My classmates provided food for my family to eat. The faculty always checked on me, asking about my wife’s health status. I appreciated their concern for my family so much. I felt Goodwin University, my classmates, and my professors were my extended family during that time. Here I am. I became an RN and worked at a hospital for special care in a medical rehab unit. I just got hired to work at Hartford Hospital as a staff OR Nurse.”

Mickel Grumo, RN, BSN



“After graduating with a business degree in 2010, I realized my career path was not as fulfilling as I had hoped. It wasn’t until I found Goodwin that my feelings of hopelessness in my career started to disappear. Since starting the program, I’ve accomplished goals I didn’t think were possible, even while experiencing struggles in my personal life. I have found the support and encouragement I needed in the accelerated BSN program. Goodwin has changed my life and is leading me to a career where I will help change the lives of others.”

Suzanne Sebastian, Student



“Goodwin’s ABSN program changed my life. I love my job as an Emergency Department Nurse. The professors were always helpful and attentive. I was really set up for success through this program!”

Cara Fiamma, Graduate



“The Goodwin ABSN program and faculty really helped prepare me for my NCLEX and future line of work. Our cohort, being the first, became a family and helped to lay a foundation for future students. Nursing was a career change for most of us, and Goodwin gave us the best resources and opportunities. I am proud to be an ABSN graduate and to have received the president’s award!”

Danielle Cooke, Graduate

Student resources and support

At Goodwin University, we are invested in the continued success of our students. We believe that you deserve great support services and resources to help you achieve your goals!

Academic Resources

- Academic Advising
 - Admissions
 - Financial Aid
 - Registrar's Office
-

Academic Support

- Academic Success Center
- Library
- Math Lab
- Tutoring

College Experience

- Clubs and Organizations
 - Student Engagement
-

Personal Support Services

- AccessAbility Services
 - Ann B. Clark Co-op
 - Counseling
-

Professional Development

- Lifetime Career Services

Financial Aid information

Paying for college doesn't have to be stressful — we make it easy to understand the costs of your education before classes even begin.

We are committed to helping you earn your degree at a cost that is affordable to you. At Goodwin, there are a variety of financial aid opportunities available to you, including scholarships, grants, student loans that need to be repaid, and work-study opportunities that provide a regular paycheck.

Check out our [financial aid page](#) to find out how Goodwin University can help you pay for your education.



Contact us today!

Call: 800-889-3282

Text: 860-467-1511

www.goodwin.edu/absn

Goodwin University is a nonprofit institution of higher education and is accredited by the New England Commission of Higher Education (NECHE), formerly known as the New England Association of Schools and Colleges (NEASC).

©2023 Goodwin University
One Riverside Drive
East Hartford, CT 06118

The baccalaureate degree program in nursing (RN-to-BSN and ABSN) at Goodwin University is accredited by the [Commission on Collegiate Nursing Education](#) (CCNE), 655 K Street, NW, Suite 750, Washington, DC 20001, 202-887-6791. Goodwin University is a member of [SARA](#) and therefore can offer our RN-to-BSN program to residents of other SARA states.

The RN-to-BSN program was granted initial accreditation by the Commission on Collegiate Nursing Education (CCNE) in February 2016. As of February 10, 2021, the accreditation was renewed for 10 years, extending to December 31, 2031. The ABSN program, which was offered for the first time in Fall 2019 per CCNE is included under this initial BSN accreditation. The next evaluation visit is scheduled for Spring of 2031.

Secondary to the delay in ADN graduates being able to take the NCLEX related to COVID 19, graduates from the associate degree program at Goodwin University only, may be admitted to the RN-BSN track and take NUR 300 and NUR 310 without an RN license. This interim policy became effective for the April 2020 graduates and will remain in place until NCLEX testing centers resume their regular scheduling processes.